

If you have established permanent residence in the United States and have a green card in your possession, you can apply for a Pell Grant. The Student Financial Aid Office at [Rust College](#) uses the ACT Family Financial Statement FFA in applying for the Pell Grant for more information contact the Financial Aid Office at (662) 252-8000, Extension 4062, or 4061.

Your application should be filed at least 3 months prior to your intended date of enrollment to allow sufficient time to process your application, obtain VISA, arrange for a foreign exchange permit, and obtain transportation.

If your application cannot be accepted under existing regulations, the Director of Enrollment Services will notify you, so that you can make other plans. You will be retained in the active file for one(1 year) and then stored in the inactive file if you have not written us during that time.

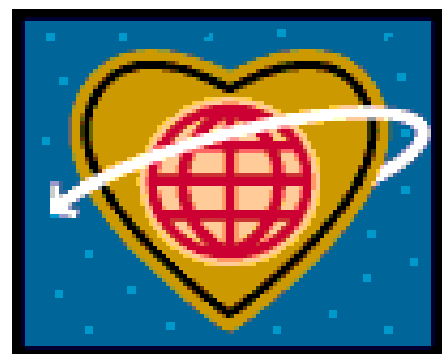
When you have received the Form I'20 or other documents required for your VISA, you should take it to the proper United States Consulate to complete your application for a United States VISA.

Make the necessary arrangement for travel to Holly Springs, Mississippi. You should make arrangements to travel to the Memphis International Airport, in Memphis, Tennessee.

If you have any other questions, contact:

Enrollment Services  
150 Rust Avenue  
Holly Springs, MS 38635  
(662) 252-8000, Ext.4059/4057.  
1 (888) 886-8492  
Fax: (662) 252-8895  
Website: [www.rustcollege.edu](http://www.rustcollege.edu)

# International Student



# Informational Guide

It is the policy of *Rust College* to extend its facilities to students from other countries. This is based upon an obligation as a part of the system of private education. We have admitted students from many countries, recognizing the intellectual and cultural contacts with other countries are not only an integral part of an educational environment, but also mean of encouraging peace and stability among the nations world. *Rust College* has established certain guidelines and standards. The guidelines and standards allow students admitted to take full advantage of opportunities offered at Rust College.

**Scholastic Achievement:** Admissions to *Rust College* is based on graduation from a secondary school or equivalent. The applicant must be eligible for admissions to an accredited post secondary institution in his own country to be considered for admissions to *Rust College*.

**Financial Adequacy:** A student from another country that applies for admissions must show that adequate financial support is available for his/her study. Upon enrolling at *Rust College* the student must deposit the first year tuition. A student must submit an affidavit of support from the person responsible for his/her financial support.

**Knowledge of English:** Every student whose native language is not English, including transfer from another university in the United States must submit with his/her application a recent test of English as a foreign language (TOEFL) of 540 or above. Information about this test can be obtained from a United States Consulate or by writing to TOEFL, Box 899, Princeton, New Jersey, USA 08540; or two(2) notarized letters attesting to English Proficiency by school administration, teacher, counselor, or religious leader.



The following credentials must be on file before the admission process is complete.

1. Application for Admissions and Financial Aid-This form is to be completed and returned to the Office of Enrollment Services with a ten dollars (\$10.00) non-refundable processing fee.
2. Vaccination Record –Have the form certified by your family physician (certified).
3. Recommendation Form (2)-These forms should be filled out by the head of your secondary school, teacher, instructor, counselor or a responsible adult.
4. Certified copy of Secondary School Leaving Certificate and Certified copy of High School Transcript.
5. Evidence of adequate financial background such as a Notarized Affidavit of Support. (Your own letter typed).
6. Room Reservation form and fifty dollars (\$50.00) fee. *Rust College* is a residential campus. Students who live outside of a 50-mile radius are REQUIRED to live on campus.
7. Upon enrolling for classes international students MUST deposit first year’s tuition.

Once the admissions process is complete, the file will be evaluated; in order for Student Exchange Visitors Information System (SEVIS) I-20 to be issued; A valid F-1 Visa or an Immigrant Visa. (No Visitor’s Visa will be accepted.)

International students who have attended an international college or university and wish to have their academic work considered for transfer credits, may submit their transcript(s) to the following address:

WES  
Headquarters  
P.O. Box 745  
Old Chelsea Station  
New York, NY10113-0745  
Telephone:(212) 966-6311  
Toll Free: 1(800) 977-8263  
Fax: (212) 966-6395  
Email: [info@wes.org](mailto:info@wes.org)